



ALPHA

奥化精密工程有限公司

PRECISION TURNING & ENGINEERING SDN. BHD.



MOVING FAST TO AEROSPACE INDUSTRY



**SINCE
1985**

Precision Machining Solution



ALPHA

奧化精密工程有限公司

PRECISION TURNING & ENGINEERING SDN. BHD.

Plant 1

Plant 1 Extension

Plant 1

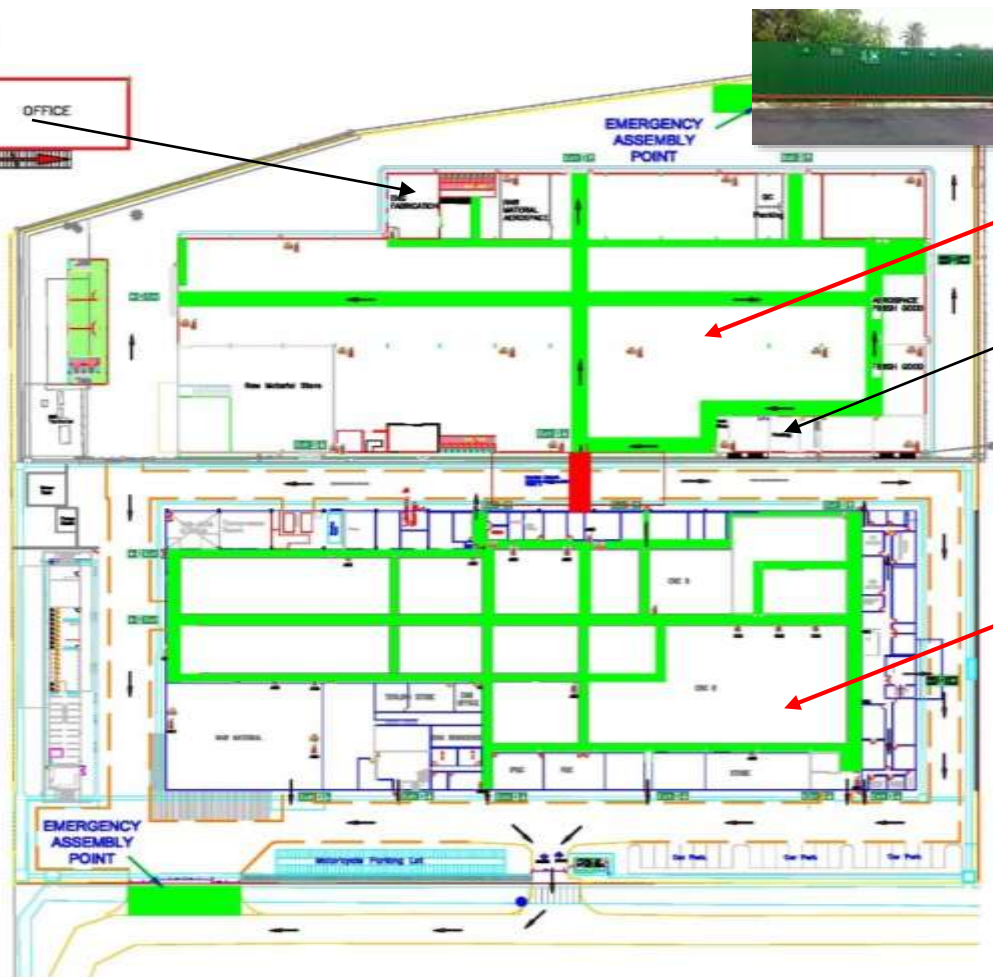
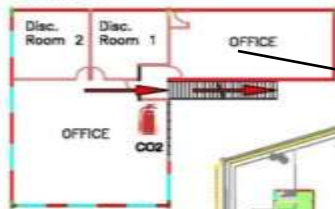
Established since Feb 1985, Alpha Precision is one of Malaysia's leading CNC machining company with close to 200 CNC machines housed in 2 facilities with built up area of 250,000 sqft.

Plant 2



Plant 1 & Plant 1 Extension Evacuation Plan & Assembly Point

AEROSPACE
MANUFACTURING
OFFICE



Plant 1 Extension ready for
Aerospace Manufacturing Industries



PELAN LANTAI TINGKAT SATU (KILANG)

Plant 1 For Non -Aerospace
Manufacturing Industries

Plant 1a and Plant 1b
Fire Evacuation Plan
2016

EMERGENCY CONTACT NUMBER		LEGEND	
BOMBA	: 999 (GENERAL)		EMERGENCY ROUTE
AMBULANCE	: 999 (GENERAL)		
JABATAN BOMBA & PENYELAMAT (KULIM)	04-4034444		FIRE EXTINGUISHER TYPE : POWDER
HOSPITAL BESAR KULIM	04-4903333		FIRE EXTINGUISHER TYPE : CO2
JABATAN PERTAHANAN AWAM (KULIM)	04-4903255		HOSE REEL
IBUPEJABAT POLIS DAERAH (KULIM)	04-4906222		



Production View





Safety Health and Environment



Safety Signage



Safety First Signage



Fire Extinguisher & Fire Escape Signage



Chemical Wash Station



Personal Protective Equipment

Material Dept.

Attire

- Helmet
- Goggle
- Earplug
- Safety Shoe
- Gloves

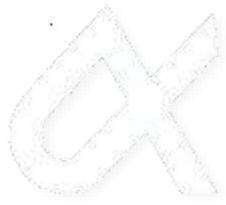
Production Attire

- Goggle
- Earplug
- Safety Shoe



**New
Workforce**

**Under Quality
Supervision**

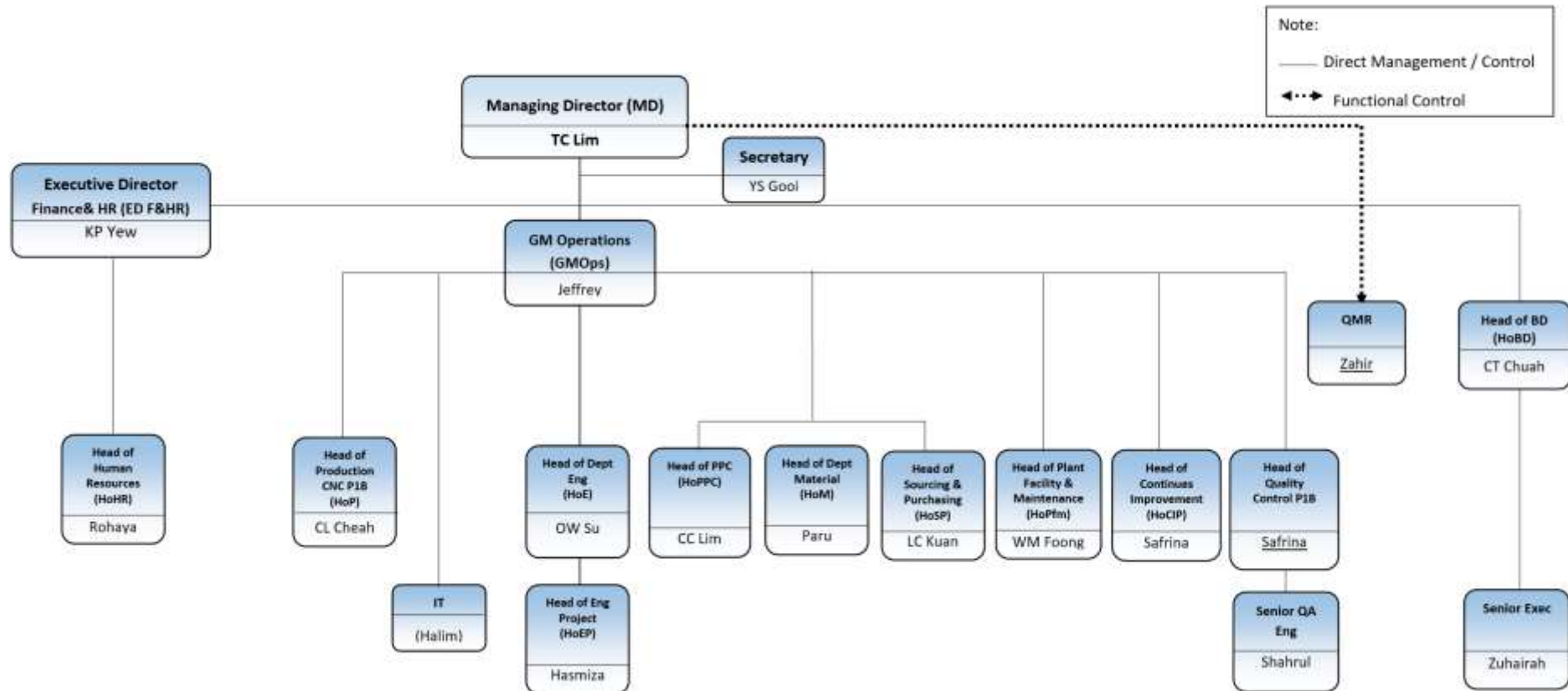


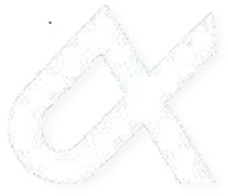
Visual Awareness in Production Floor





Aerospace Organizational Chart

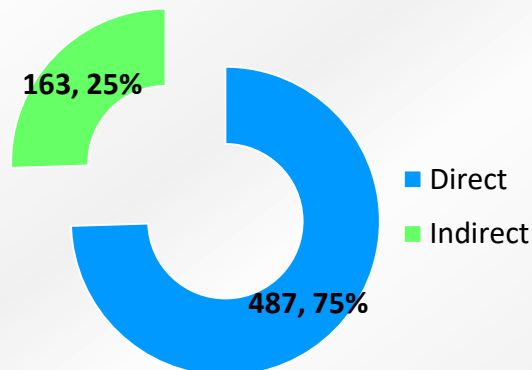




Company Overview

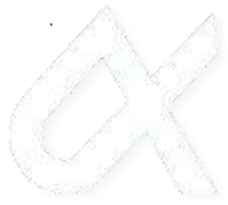
Authorized Capital : RM 25,000,000
Paid Up Capital : RM 11,262,808
Board of Directors : 9

Headcount Breakdown



Total Headcount - 650





Vision and Mission Statement



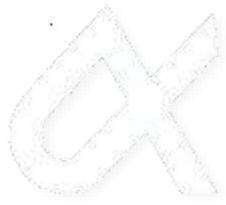
Our Vision:

A prestigious world class manufacturer specializes in providing precision machining solutions

Our Mission:

Sharpen manufacturing effectiveness through continuous Improvement & adopting 5 core values





Core Values



Accountability



Leadership



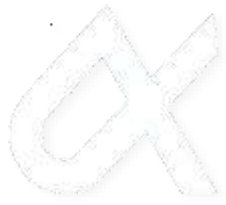
Professionalism



Honesty



Adaptability



Industry Recognition



Supplier Of The Year Award 2007
Emerson Process Management
(Micro Motion)



Strategic Supplier Award 2002-2014
Emerson Process Management
(Rosemount)



Micro Motion – Recognition for Outstanding Delivery and Ongoing Partnership year 2010
(Emerson)

Marquee Supplier Award 2008
Emerson Process Management
(Emerson)





Supplier Leadership Award 2008
Emerson Process Management
(Rosemount)





ISO Certification





CERTIFICATE



Alpha Precision Turning & Engineering Sdn Bhd
Lot 40, Lorong Perusahaan 1,
Kulim Industrial Estate,
09000 Kulim, Kedah Darul Aman,
Malaysia

This is to certify that


has implemented and maintains a **Quality Management System**.

Scope:
Manufacture and Assembly of Precision Machined Components

Through an audit, documented in a report, it was verified that the management system fulfills the requirements of the following standard:


ISO 9001 : 2015

Certificate registration no. 50450006 QM15
Issue date 2018-06-08
Expiry date 2020-04-18




UKAS
MANUFACTURING
SYSTEMS
0062

DQS UK Ltd


Ceryle Matheson
Managing Director

Accredited Body: DQS UK Ltd, Paines House, Unit 5, Watbrook Business Centre,
Green Lane, Huddersley, West Yorkshire, WF4 6NW, United Kingdom





CERTIFICATE



ALPHA
奥化精密工程有限公司
PRECISION TURNING & ENGINEERING SDN. BHD.

This is to certify that

Alpha Precision Turning & Engineering Sdn. Bhd.
Lot 2A, Jalan Lunas,
Kawasan Perindustrian Kulim,
09000 Kulim, Kedah,
Malaysia

has implemented and maintains a **Quality Management System**

Scope:
Manufacture of Precision Machined Components for Industrial Applications

Through an audit, documented in a report, it was verified that the management system fulfills the requirements of the following standard:

ISO 9001 : 2015

Certificate registration no. 50450007 QM15
Valid from 2018-01-05
Valid until 2021-01-04
Date of certification 2018-01-05



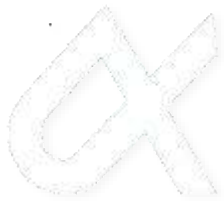
IAF
Dakks
Deutscher
Akademischer
Vereinigung
DIN EN ISO 9001:2015

DQS GmbH


Stefan Heide
Managing Director

Accredited Body: DQS GmbH, August-Scharf-Strasse 21, 60433 Frankfurt am Main, Germany
Automotive Office: DQS Malaysia, Suite 43-4 Setia Avenue, Jalan Setia Prima S U 13/5,
Setia Alam Seksyen U 13, 40170 Shah Alam, Selangor - Malaysia





ISO Certification



CERTIFICATE



This is to certify that

Alpha Precision Turning & Engineering Sdn. Bhd.

Lot 40, Lorong Perusahaan 1,
Kawasan Perindustrian Kulim,
09000 Kulim, Kedah,
Malaysia

has implemented and maintains a **Quality Management System**

Scope:
Manufacture of Precision Machined Components.

An audit, conducted and documented in a report, has verified that this quality management system fulfills the requirements of the following International Automotive Standard:

IATF 16949:2016
(without product design)

Certificate registration no. 50450006 IATF16
Main certificate registration no. 50450006 IATF16
Issuing date 2018-01-04
This certificate is valid until 2021-01-03
IATF No. 0284851



For and on behalf of DQS

Nurani S. Venkateshram
Corporate Program Manager Automotive, DQS Holding GmbH

Michael Drechsel
Managing Director, DQS Holding GmbH

CERTIFICATE



This is to certify that

Alpha Precision Turning & Engineering Sdn. Bhd.

Lot 2A, Jalan Lunas,
Kawasan Perindustrian Kulim,
09000 Kulim, Kedah,
Malaysia

has implemented and maintains a **Quality Management System**

Scope:
Manufacture of Precision Machined Components.

An audit, conducted and documented in a report, has verified that this quality management system fulfills the requirements of the following International Automotive Standard:

IATF 16949:2016
(without product design)

Certificate registration no. 50450007 IATF16
Main certificate registration no. 50450006 IATF16
Issuing date 2018-01-05
This certificate is valid until 2021-01-04
IATF No. 0284856



For and on behalf of DQS

Nurani S. Venkateshram
Corporate Program Manager Automotive, DQS Holding GmbH

Michael Drechsel
Managing Director, DQS Holding GmbH



ISO Certification



CERTIFICATE



Alpha Precision Turning & Engineering Sdn. Bhd.
Lot 40, Lorong Perusahaan 1
Kawasan Perindustrian Kulim
09000 Kulim, Kedah
Malaysia

This is to certify that

has implemented and maintains a **Quality Management System** for its certification structure Single Site.

Scope:
Manufacture and Assembly of Precision Machined Components

Through an audit, performed in compliance with EN 9104:001 (2013), it was verified that the management system fulfills the requirements of the following technically equivalent standards:

EN 9100:2018
Equivalent to:
AS9100D
JIS Q 9100:2016

Certificate registration no.	50450006 AS0018D
Date of original certification	2014-05-19
Re-issue date	2016-12-25
Issue date	2017-04-19
Expiry date	2020-04-18
Date of certification	2018-12-23

DQS GmbH

Stefan Heide
Managing Director

A certified Body: DQS GmbH, August-Schwarz-Strasse 21, 69433 F. Administrative Office: DQS Holding GmbH, Kaiser-Alexander-Allee







CERTIFICATE OF REGISTRATION

This is to certify that

Alpha Precision Turning & Engineering Sdn. Bhd.
(Company No.: 135684-D)
Lot 40, Lorong Perusahaan 1,
Kulim Industrial Estate,
09000 Kulim,
Kedah Darul Aman,
Malaysia,

has been audited and found to meet the requirements of standard
ISO 14001:2015 Environmental management System

Scope of certification
Manufacture of Precision Machined Components for Industrial Applications

Certificate number: 3420
Scope: 135684-D
Certificate valid from: 11 March 2021
Certificate expiry date: 10 March 2023
Date of first certification: 11 March 2014

Exova BM TRADA, 21 The Square, Watlington, Oxfordshire, OX12 9JN, United Kingdom
Representative Office: BM TRADA (M) Sdn Bhd, Lot 10, Kulim Industrial Estate, Kulim, Kedah Darul Aman, Malaysia
This certificate remains the property of Exova BM TRADA. This certificate will be issued only once, provided it is kept up to date and is not subject to any conditions of use. The word of the BM TRADA accreditation body remains applicable to the scope of the certificate.





Company Milestones

2.1985	Established Alpha Precision Turning & Engineering Sdn. Bhd.
7.1985	Commenced of operation at Chain Ferry
7.1994	Relocated to Kulim Industrial Estate
10.1996	Alpha Precision obtained Manufacturing Licenses
1997	Achieved ISO 9002 : 1994 (Upgraded to ISO 9001: 2000 in Year 2002)
1997	Begun Export business with Emerson Process Management divisions
2002	Started Steering Rack Manufacturing for ZF Lenksysteme
2002~2014	Awarded by Emerson Process Management – Rosemount Inc Strategic Supplier Award
2004/2007	Awarded by Emerson Process Management – SVIM Supplier Excellence Award 2007
2006	Achieved TS16949:2000 By UL Registration Company
2007	Started Steering Rack Manufacturing for TRW Automotive
2007	Awarded by Emerson Process Management – MMI Inc Supplier of the Year Award 2007
2008	Awarded by Emerson Process Management – SVIM Supplier Excellent Award 2008
2009	Awarded By Modenas – Best Performance Vendor 2009
2010	Awarded By Micro Motion– Recognition for Outstanding Delivery and Ongoing Partnership
2012	Plant 1 Official Opening on 13 June 2012
2013	Started operation for 5 axis machine Mori Seiki NMV 3000 DCG
5.2014	Started operation for 5 axis machine Okuma Multus B300II-W900
5.2014	Received ISO AS 9100C Aerospace certification from DQS Germany
10.2014	Added CNC Chucker lathe with spindle bore 230mm by 3 meters turning length
11.2015	New 5 axis machine Mazak BRXI-700
1.2016	New facility Plant 1 Ext ready with additional 120,000 sqft area
4.2016	Additional 5 axis machine Variaxis 630-5X II
10.2016	Started FAI for aerospace parts
1.2017	Started mass production for aerospace parts



Product Industries

Aerospace Engineering





Product Industries

Aerospace Engineering





Product Industries

Aerospace Engineering





Product Industries

Aerospace Engineering



SUS



ALU



SUS



ALU



Inconel 718



Inconel 718



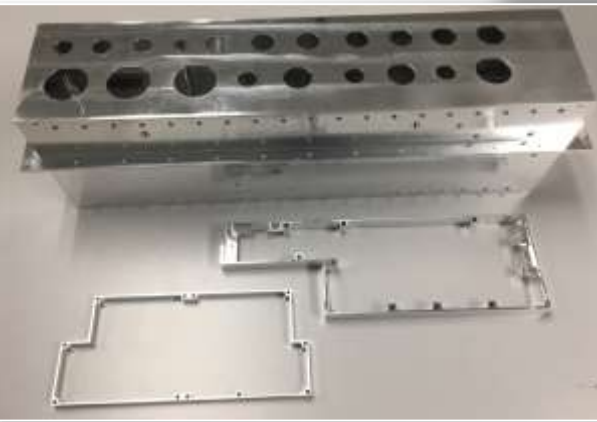
Ti Gr 5





Product Industries

Aerospace Engineering

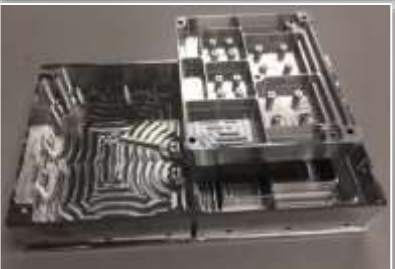




Product Industries

Aerospace Engineering

ALU 6061 T6





Product Industries

Flow Process Sensor



Textile Machinery





Product Industries

Oil & Gas Exploration & Production





Product Industries

Automotive Industry



Medical Industry





Product Industries

Industrial Automation





Material Variety

O&G - Hard Metal/Exotic Materials

Inconel 825



Monel K500



Inconel 718



**Alloy
935**



**Hastelloy
C276**





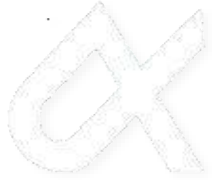
Material Variety

O&G : Exotic Materials



Titanium Grade 5



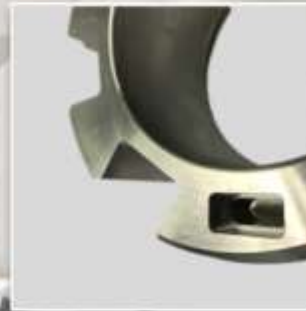


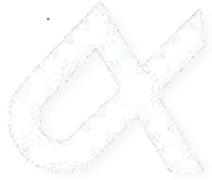
Material Variety

O&G : Stainless Steels 304/316



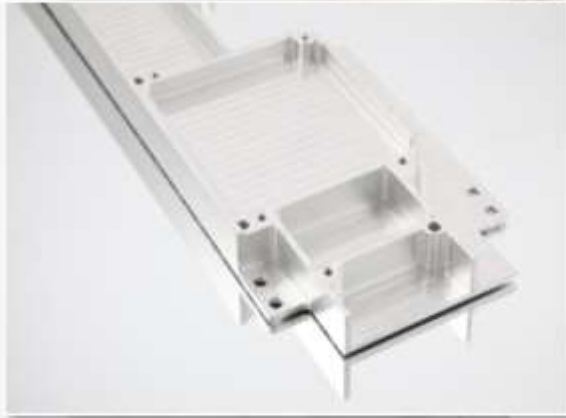
316/316L





Material Variety

O&G & AS - Aluminum



AL 6061/6082/7050





Material Variety

O&G : Engineering Plastics



POM/ACETAL/DELRIN/PA6







CNC 5-axis Milling Machine


Machine	Details
 <p data-bbox="355 825 666 858">Mazak BRXI-700</p>	<p data-bbox="1006 496 1406 529">No. Axis : 5</p> <p data-bbox="1006 546 1765 579">Work Vol. Travel size: 630(X),1100(Y),600(Z)</p> <p data-bbox="1006 596 1566 629">Accuracy : 0.005 mm</p> <p data-bbox="1006 646 1431 679">ATC/Turret Position : 80</p> <p data-bbox="1006 696 1499 729">Spindle speed (rpm) : 18000</p>
 <p data-bbox="355 1300 716 1333">Variaxis 630 5X-II T</p>	<p data-bbox="1006 986 1406 1019">No. Axis : 5</p> <p data-bbox="1006 1036 1740 1069">Work Vol. Travel size: 630(X),765(Y),510(Z)</p> <p data-bbox="1006 1086 1566 1119">Accuracy : 0.005 mm</p> <p data-bbox="1006 1136 1431 1169">ATC/Turret Position : 20</p> <p data-bbox="1006 1186 1499 1219">Spindle speed (rpm) : 18000</p>

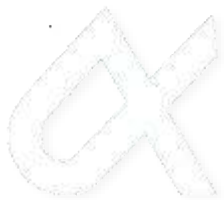


CNC Milling Machine

Machine	Details
 <p data-bbox="210 825 823 858">5 Axis Mori Seiki NMV 3000 DCG</p>	<p data-bbox="1006 496 1410 529">No. Axis : 5</p> <p data-bbox="1006 546 1740 579">Work Vol. Travel size: 500(X),350(Y),510(Z)</p> <p data-bbox="1006 596 1564 629">Accuracy : 0.005 mm</p> <p data-bbox="1006 646 1429 679">ATC/Turret Position : 61</p> <p data-bbox="1006 696 1497 729">Spindle speed (rpm) : 12000</p>
 <p data-bbox="423 1300 653 1333">Litz DV-1000</p>	<p data-bbox="1006 986 1410 1019">No. Axis : 3</p> <p data-bbox="1006 1036 1765 1069">Work Vol. Travel size: 1020(X),560(Y),600(Z)</p> <p data-bbox="1006 1086 1564 1119">Accuracy : 0.010 mm</p> <p data-bbox="1006 1136 1439 1169">ATC/Turret Position : 24</p> <p data-bbox="1006 1186 1497 1219">Spindle speed (rpm) : 15000</p>

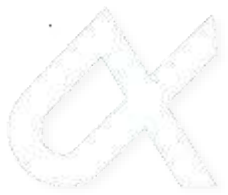
CNC Turnmill and Multi Axis Machine

Machine	Details
 <p>Twin Turret Nakamura Tome WT300</p>	<p>Max Turn Dia : Ø300 mm Work Travel Length : 500 mm Accuracy : 0.010 mm ATC/Turret Position : 36 Spindle speed (rpm) : 5000</p>
 <p>5 Axis Okuma Multus B300II-W900</p>	<p>Max Turn Dia : Ø52 mm Work Travel Length : 1500 mm Accuracy : 0.010 mm ATC/Turret Position : 61 Spindle speed (rpm) : 10000</p>



Strategic and Major Customers





How to Contact Us

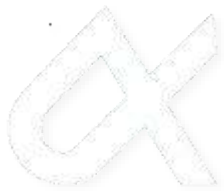


Lot 40, Lorong Perusahaan 1,
Kulim Industrial Estate,
09000 Kulim,
Kedah, Malaysia

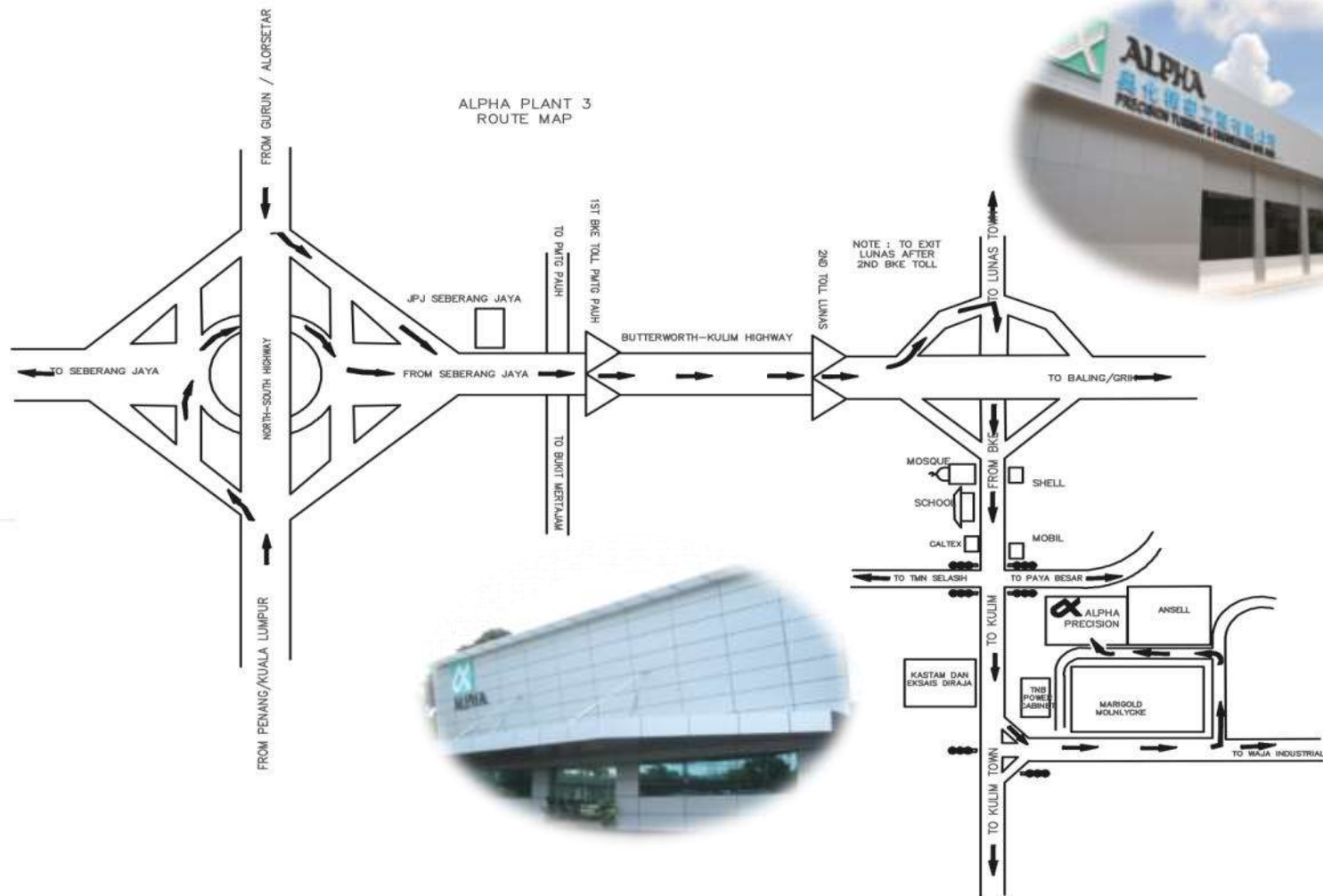


Lot 2A, Kulim Industrial Estate,
Jalan Lunas,
09000 Kulim,
Kedah, Malaysia

Email : aptesb@aptesb.com
Website : <http://www.aptesb.com>
Phone : +6-04-4891891/2/3
Fax : +6-04-4891885



Map to Alpha





Questions and Answers

Q&A